

LINBRAZE[®]
brazing powders industry

Metal Powders
for Diamond Tools

The future is in your hands

Company Profile

The real global producer of overmore than 2000 different alloys for the production of diamond tools, who starting from the raw material, produces and develops internally, metal powders alloys, and pre-alloyed powders . **Pioneer into the production of active brazing alloy powders for the diamond beads.** Research and develop of new technologies in support of Diamond Tools Industries, availables through different principles of atomization and nano-technologies. Our approach to the customer is direct, without any agent or mediator. **We have tailored solutions to meet the higher process and quality requirements.** Considering a deepening as a real opportunity, We trust into the customers willingness to verify our technical skills, the quality and performance of our products, and in their curiosity to try our price competitiveness directly.

We're really hoping to win your trust and to drive you towards excellent results.



Bronze powders for diamond tools

Irregular bronze powders specifically developed for the diamond tool industry, appreciated for their stability in the specific forming process.

Our irregular bronze powders can be used pure or mixed with other components according to the customer needs.

All our powders are available in a variety of packaging options including steel or plastic drums 15-20-50 Kg.

Grade	Composition	Apparent density	Grain size
BRONZE UD	Cu 90% - Sn 10%	2,8 - 3,5 g/cm ³	-75 µm -200 #
BRONZE UDX	Cu 90% - Sn 10%	2,8 - 3,4 g/cm ³	-45 µm -325 #
BRONZE UC	Cu 89% - Sn 11%	2,8 - 3,5 g/cm ³	-75 µm -200 #
BRONZE UCX	Cu 89% - Sn 11%	2,8 - 3,5 g/cm ³	-45 µm -325 #
BRONZE UP	Cu 85% - Sn 15%	3,0 - 3,8 g/cm ³	-75 µm -200 #
BRONZE UPX	Cu 85% - Sn 15%	3,0 - 3,8 g/cm ³	-45 µm -325 #
BRONZE UV	Cu 80% - Sn 20%	3,2 - 3,8 g/cm ³	-75 µm -200 #
BRONZE UVX	Cu 80% - Sn 20%	3,2 - 3,8 g/cm ³	-45 µm -325 #
BRONZE UT	Cu 70% - Sn 30%	3,2 - 3,8 g/cm ³	-75 µm -200 #
BRONZE UTX	Cu 70% - Sn 30%	3,2 - 3,8 g/cm ³	-45 µm -325 #
BRONZE 40 P	Cu 60% - Sn 40%	3,5 - 4,5 g/cm ³	Upon request
BRONZE 50 P	Cu 50% - Sn 50%	3,3 - 3,9 g/cm ³	Upon request

Powders for diamond tools

Grade	Composition	Apparent density	Grain size
SN-SF-75	Sn 99,98%	3,5 - 4,5 g/cm ³	-75 µm -200 #
ZN-SF-75	Zn 99,97%	2,7 - 3,2 g/cm ³	-75 µm -200 #
NIP 20 EF	Ni bal% - P 18 - 21%	2,8 - 3,2 g/cm ³	- 106 µm -140 #
CU-EP-9980	Cu 99,9%	1,7 - 1,9 g/cm ³	-75 µm -200 #
RO 180	Cu bal% - P 6,6 -7,4%	3,5 - 4,6 g/cm ³	Upon request
RO 386	Cu bal% - P 7 -Sn 7%	3,6 - 4,0 g/cm ³	Upon request
FERCA 3	Fe bal % - C 0,03%	3,4 - 4,4 g/cm ³	-20 µm -625 #
FEP 23	Fe bal % - P 19-23%	2,4 - 3,4 g/cm ³	-75 µm -200 #
FE CU 30	Fe 70 % - Cu 30 %	2,8 - 3,6 g/cm ³	-75 µm -200 #
FE CU 40	Fe 60 % - Cu 40 %	3,0 - 3,8 g/cm ³	-75 µm -200 #

Pearlbraz & RASTAR's Powders for diamond beads

Special formulated filler powder alloys, silver containing, used for brazing in free sinter process to be mixed in the "green".

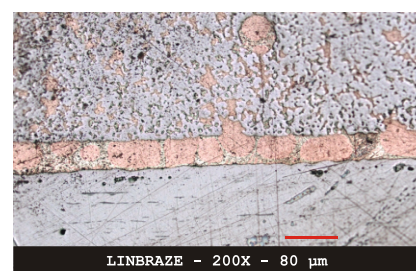
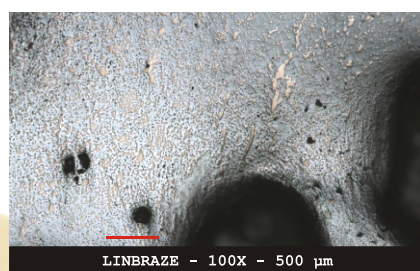
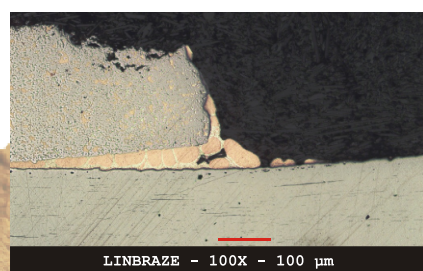
• Information and Guidance;

- ➔ Ready powder alloys to be mixed into the granulated mix "green";
- ➔ Silver containing alloys has the feature to wet and bond the steel body with the "green";
- ➔ The alloys has the characteristic to fill the narrow gaps "fill the sponge".

• Product and Process Benefits;

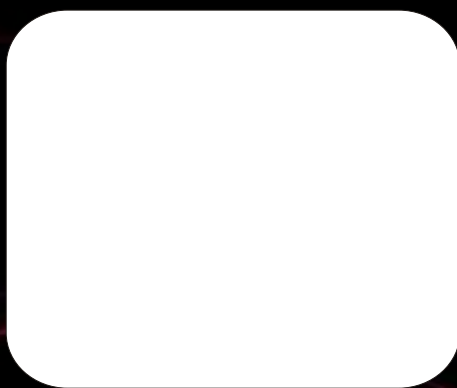
- ➔ Fast Process = Brazing and Sintering in ONE-STEP;
- ➔ Efficiency = NO need to use RING ALLOYS, constitutes an economic benefit and reduction in fixed costs;
- ➔ Product Efficiency = IMPROVES the diamond bonding and fill the narrow gaps into the green.

PEARLBRAZE 3	Ag - Cu - Sn	4,0 - 4,5 g/cm ³	-45 µm -325 #
RASTAR 80/10/10	Ag - Cu -Sn	4,0 - 4,5 g/cm ³	-45 µm -325 #
RASTAR 65/5/30	Ag - Cu -Sn	4,0 - 4,5 g/cm ³	-45 µm -325 #



Silver Powders for diamond tools

Grade	Composition	Apparent density	Grain size
DIALLOY®	Cu - Ni - Ag - Ti -Si	4,5 - 5,0 g/cm ³	-45 µm -325 #
TO 272	Ag 72% - Cu 28%	4,5 - 5,5 g/cm ³	-45 µm -325 #
AG-EP-1720	Ag 99,99%	1,2 - 1,8 g/cm ³	-32 µm -425 #



C/da Torre Chimera - Sp180
93019 Sommatino (CL) - Italy
Tel. +39 0922 871 694 - Fax +39 0922 709 064
www.linbrazze.com